



www.billbeall.com

FOR LEASE

± 3,216 SF Third Floor Class “A” Office Space

1445 E. Republic Rd., Springfield, MO 65804



HIGHLIGHTS

- ± 3,216 SF Available
- Class “A” Professional Office Space
- Secure Access Controlled
- Southeast Springfield Location
- LEASE RATE: \$23.00 / SF - Full Service Gross
- \$35.00 Infill Allowance
- Republic Rd. & Fremont Accessibility
- Third Floor Window Wall Design with Brilliant Views



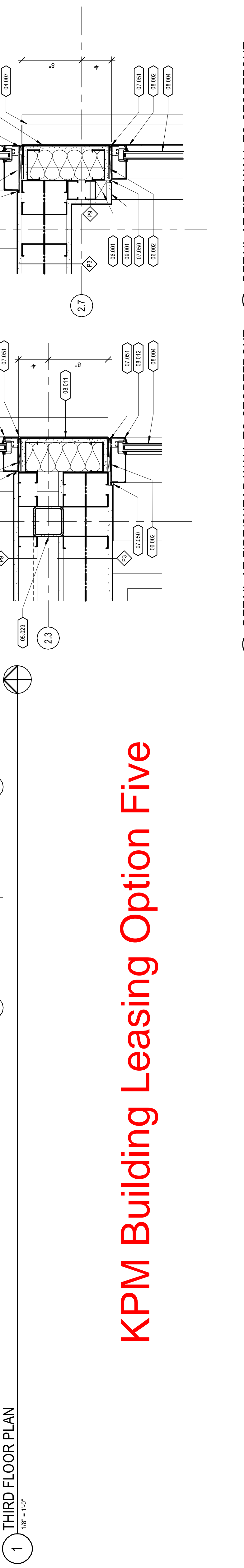
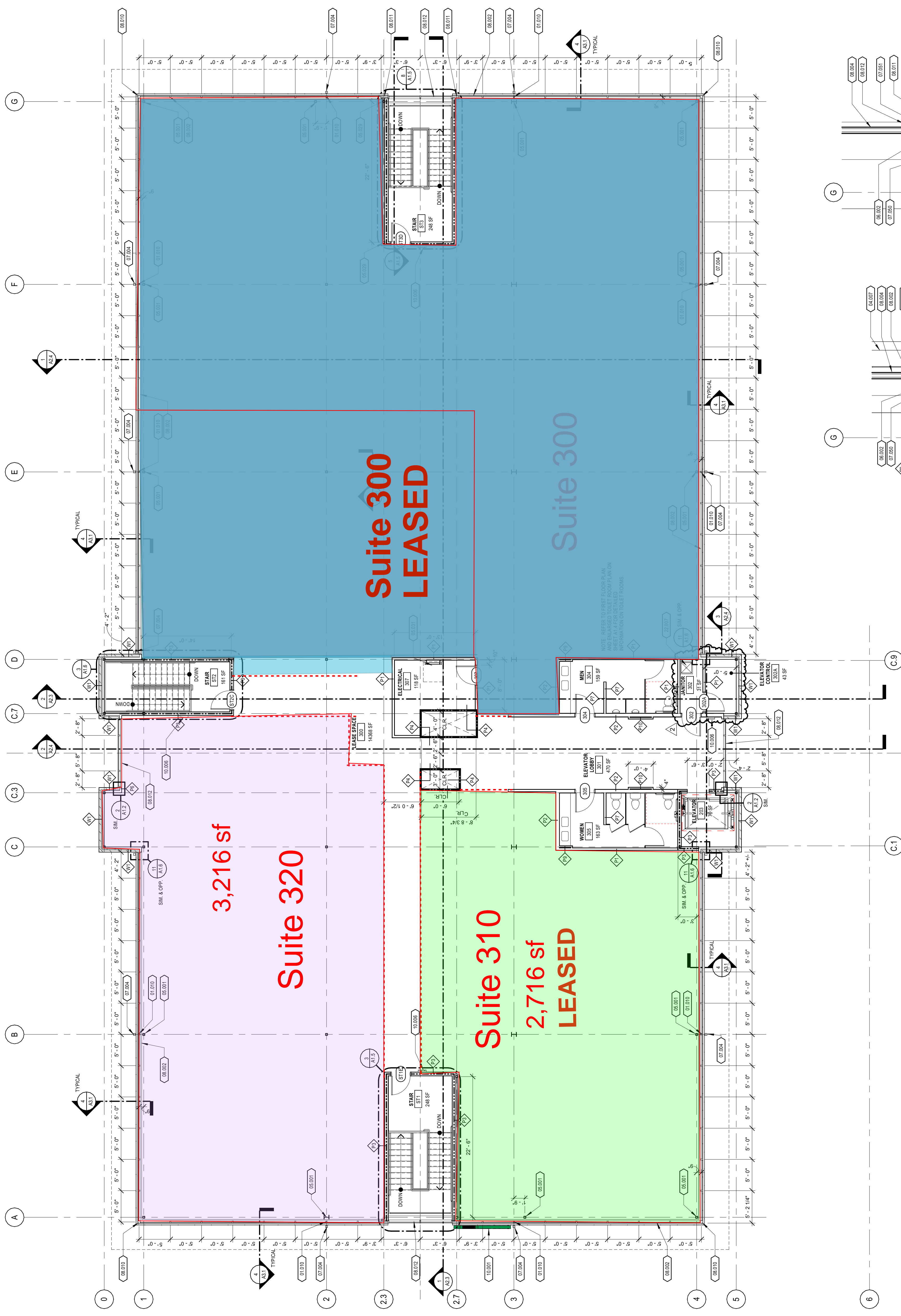
2921 S. National Ave., Springfield, MO 65804

(417) 887-5535 email: beall@billbeall.com

1445 E. Republic Rd.
Springfield, MO 65804



2921 S. National Ave., Springfield, MO 65804
(417) 887-5535 email: beall@billbeall.com



1 THIRD FLOOR PLAN 1/8" = 1'-0"
 2 DETAIL AT FIRE/SHEAR WALL TO STOREFRONT 1/2" = 1'-0"
 3 DETAIL AT FIRE WALL TO STOREFRONT 1/2" = 1'-0"

KPM Building Leasing Option Five

1445 E. Republic Rd.
Springfield, MO 65804



2921 S. National Ave., Springfield, MO 65804
(417) 887-5535 email: beall@billbeall.com



Business Summary

1445 E Republic Rd, Springfield, Missouri, 65804
Rings: 1, 3, 5 mile radii

Prepared by Esri
Latitude: 37.13761
Longitude: -93.27103

Data for all businesses in area	1 mile		3 miles		5 miles	
	Total Businesses:	932	Total Businesses:	4,020	Total Businesses:	7,335
	Total Employees:	13,988	Total Employees:	73,374	Total Employees:	117,294
Total Residential Population:	6,436	57,813	149,334	Employee/Residential Population Ratio (per 100 Residents)	217	79
by SIC Codes	Number	Percent	Number	Percent	Number	Percent
Agriculture & Mining	9	1.0%	31	0.2%	58	1.4%
Construction	26	2.8%	147	1.1%	146	3.6%
Manufacturing	8	0.9%	112	0.8%	44	1.1%
Transportation	12	1.3%	198	1.4%	58	1.4%
Communication	8	0.9%	179	1.3%	51	1.3%
Utility	0	0.0%	0	0.0%	1	0.0%
Wholesale Trade	11	1.2%	95	0.7%	65	1.6%
Retail Trade Summary	197	21.1%	4,213	30.1%	946	23.5%
Home Improvement	6	0.6%	321	2.3%	25	0.6%
General Merchandise Stores	7	0.8%	806	5.8%	35	0.9%
Food Stores	22	2.4%	366	2.6%	83	2.1%
Auto Dealers, Gas Stations, Auto Aftermarket	10	1.1%	292	2.1%	73	1.8%
Apparel & Accessory Stores	12	1.3%	93	0.7%	112	2.8%
Furniture & Home Furnishings	21	2.3%	169	1.2%	74	1.8%
Eating & Drinking Places	73	7.8%	1,670	11.9%	295	7.3%
Miscellaneous Retail	46	4.9%	496	3.5%	248	6.2%
Finance, Insurance, Real Estate Summary	190	20.4%	1,835	13.1%	677	16.8%
Banks, Savings & Lending Institutions	30	3.2%	248	1.8%	122	3.0%
Securities Brokers	38	4.1%	206	1.5%	101	2.5%
Insurance Carriers & Agents	57	6.1%	421	3.0%	214	5.3%
Real Estate, Holding, Other Investment Offices	65	7.0%	960	6.9%	239	5.9%
Services Summary	417	44.7%	7,110	50.8%	1,774	44.1%
Hotels & Lodging	8	0.9%	158	1.1%	29	0.7%
Automotive Services	3	0.3%	31	0.2%	48	1.2%
Motion Pictures & Amusements	29	3.1%	216	1.5%	117	2.9%
Health Services	107	11.5%	4,013	28.7%	425	10.6%
Legal Services	37	4.0%	289	2.1%	130	3.2%
Education Institutions & Libraries	9	1.0%	197	1.4%	51	1.3%
Other Services	223	23.9%	2,206	15.8%	975	24.3%
Government	2	0.2%	20	0.1%	19	0.5%
Unclassified Establishments	53	5.7%	49	0.4%	182	4.5%
Totals	932	100.0%	13,988	100.0%	4,020	100.0%

Businesses	Number	Percent	Employees	Number	Percent	Employees	Number	Percent	Employees	Number	Percent
Agriculture & Mining	143	1.9%	259	0.4%	143	1.9%	672	0.6%	143	1.9%	259
Construction	366	5.0%	917	1.2%	366	5.0%	2,441	2.1%	366	5.0%	917
Manufacturing	136	1.9%	442	0.6%	136	1.9%	2,833	2.4%	136	1.9%	442
Transportation	130	1.8%	631	0.9%	130	1.8%	1,175	1.0%	130	1.8%	631
Communication	104	1.4%	653	0.9%	104	1.4%	2,123	1.8%	104	1.4%	653
Utility	14	0.2%	115	0.2%	14	0.2%	678	0.6%	14	0.2%	115
Wholesale Trade	197	2.7%	554	0.8%	197	2.7%	3,036	2.6%	197	2.7%	554
Retail Trade Summary	1,624	22.1%	17,353	23.7%	1,624	22.1%	29,358	25.0%	1,624	22.1%	17,353
Home Improvement	64	0.9%	546	0.7%	64	0.9%	847	0.7%	64	0.9%	546
General Merchandise Stores	59	0.8%	2,793	3.8%	59	0.8%	3,208	2.7%	59	0.8%	2,793
Food Stores	148	2.0%	1,454	2.0%	148	2.0%	3,627	3.1%	148	2.0%	1,454
Auto Dealers, Gas Stations, Auto Aftermarket	167	2.3%	1,944	2.6%	167	2.3%	3,432	2.9%	167	2.3%	1,944
Apparel & Accessory Stores	138	1.9%	1,098	1.5%	138	1.9%	1,433	1.2%	138	1.9%	1,098
Furniture & Home Furnishings	116	1.6%	692	0.9%	116	1.6%	918	0.8%	116	1.6%	692
Eating & Drinking Places	515	7.0%	6,278	8.6%	515	7.0%	9,882	8.4%	515	7.0%	6,278
Miscellaneous Retail	418	5.7%	2,547	3.5%	418	5.7%	6,011	5.1%	418	5.7%	2,547
Finance, Insurance, Real Estate Summary	1,077	14.7%	7,494	10.2%	1,077	14.7%	9,889	8.4%	1,077	14.7%	7,494
Banks, Savings & Lending Institutions	191	2.6%	1,734	2.4%	191	2.6%	2,329	2.0%	191	2.6%	1,734
Securities Brokers	139	1.9%	494	0.7%	139	1.9%	808	0.7%	139	1.9%	494
Insurance Carriers & Agents	320	4.4%	1,285	1.8%	320	4.4%	1,898	1.6%	320	4.4%	1,285
Real Estate, Holding, Other Investment Offices	427	5.8%	3,981	5.4%	427	5.8%	4,854	4.1%	427	5.8%	3,981
Services Summary	3,108	42.4%	44,429	60.6%	3,108	42.4%	62,869	53.6%	3,108	42.4%	44,429
Hotels & Lodging	46	0.6%	511	0.7%	46	0.6%	882	0.8%	46	0.6%	511
Automotive Services	129	1.8%	381	0.5%	129	1.8%	1,076	0.9%	129	1.8%	381
Motion Pictures & Amusements	221	3.0%	938	1.3%	221	3.0%	1,928	1.6%	221	3.0%	938
Health Services	550	7.5%	31,785	43.3%	550	7.5%	34,132	29.1%	550	7.5%	31,785
Legal Services	195	2.7%	814	1.1%	195	2.7%	1,606	1.4%	195	2.7%	814
Education Institutions & Libraries	144	2.0%	1,648	2.2%	144	2.0%	7,514	6.4%	144	2.0%	1,648
Other Services	1,822	24.8%	8,351	11.4%	1,822	24.8%	15,731	13.4%	1,822	24.8%	8,351
Government	85	1.2%	274	0.4%	85	1.2%	1,954	1.7%	85	1.2%	274
Unclassified Establishments	349	4.8%	253	0.3%	349	4.8%	267	0.2%	349	4.8%	253
Totals	7,335	100.0%	73,374	100.0%	7,335	100.0%	117,294	100.0%	7,335	100.0%	73,374

Source: Copyright 2018 Infogroup, Inc. All rights reserved. Esri Total Residential Population forecasts for 2018.
Date Note: Data on the Business Summary report is calculated using Esri's Data allocation method which uses census block groups to allocate business summary data to custom areas.



Business Summary

1445 E Republic Rd, Springfield, Missouri, 65804
Rings: 1, 3, 5 mile radii

Prepared by Esri
Latitude: 37.13761
Longitude: -93.27103

by NAICS Codes	Businesses		Employees		Businesses		Employees		Businesses		Employees	
	Number	Percent	Number	Percent	Number	Percent	Number	Percent	Number	Percent	Number	Percent
Agriculture, Forestry, Fishing & Hunting	1	0.1%	4	0.0%	3	0.1%	12	0.0%	18	0.2%	54	0.0%
Mining	1	0.1%	2	0.0%	4	0.1%	25	0.0%	4	0.1%	26	0.0%
Utilities	0	0.0%	0	0.0%	1	0.0%	115	0.2%	8	0.1%	531	0.5%
Construction	31	3.3%	176	1.3%	169	4.2%	1,054	1.4%	404	5.5%	2,658	2.3%
Manufacturing	9	1.0%	96	0.7%	52	1.3%	462	0.6%	153	2.1%	2,865	2.4%
Wholesale Trade	11	1.2%	95	0.7%	62	1.5%	531	0.7%	187	2.5%	2,977	2.5%
Retail Trade	118	12.7%	2,486	17.8%	626	15.6%	10,872	14.8%	1,066	14.5%	19,176	16.3%
Motor Vehicle & Parts Dealers	8	0.9%	280	2.0%	59	1.5%	1,865	2.5%	136	1.9%	3,263	2.8%
Furniture & Home Furnishings Stores	15	1.6%	143	1.0%	43	1.1%	396	0.5%	65	0.9%	517	0.4%
Electronics & Appliance Stores	5	0.5%	21	0.2%	31	0.8%	266	0.4%	46	0.6%	354	0.3%
Bldg Material & Garden Equipment & Supplies Dealers	6	0.6%	321	2.3%	25	0.6%	546	0.7%	63	0.9%	835	0.7%
Food & Beverage Stores	15	1.6%	299	2.1%	56	1.4%	1,247	1.7%	110	1.5%	3,338	2.8%
Health & Personal Care Stores	20	2.1%	151	1.1%	76	1.9%	999	1.4%	112	1.5%	1,583	1.3%
Gasoline Stations	3	0.3%	12	0.1%	14	0.3%	79	0.1%	30	0.4%	169	0.1%
Clothing & Clothing Accessories Stores	14	1.5%	97	0.7%	133	3.3%	1,205	1.6%	168	2.3%	1,605	1.4%
Sport Goods, Hobby, Book, & Music Stores	11	1.2%	233	1.7%	55	1.4%	841	1.1%	87	1.2%	3,228	2.8%
General Merchandise Stores	7	0.8%	806	5.8%	35	0.9%	2,793	3.8%	59	0.8%	3,208	2.7%
Miscellaneous Store Retailers	14	1.5%	122	0.9%	90	2.2%	626	0.9%	165	2.2%	1,010	0.9%
Nonstore Retailers	2	0.2%	1	0.0%	8	0.2%	8	0.0%	24	0.3%	65	0.1%
Transportation & Warehousing	5	0.5%	23	0.2%	22	0.5%	302	0.4%	67	0.9%	763	0.7%
Information	18	1.9%	495	3.5%	91	2.3%	1,462	2.0%	195	2.7%	3,408	2.9%
Finance & Insurance	126	13.5%	889	6.4%	441	11.0%	3,538	4.8%	663	9.0%	5,101	4.3%
Central Bank/Credit Intermediation & Related Activities	29	3.1%	244	1.7%	119	3.0%	1,693	2.3%	196	2.7%	2,329	2.0%
Securities, Commodity Contracts & Other Financial	40	4.3%	224	1.6%	107	2.7%	559	0.8%	145	2.0%	873	0.7%
Insurance Carriers & Related Activities; Funds, Trusts &	57	6.1%	421	3.0%	215	5.3%	1,285	1.8%	321	4.4%	1,900	1.6%
Real Estate, Rental & Leasing	58	6.2%	847	6.1%	262	6.5%	3,427	4.7%	490	6.7%	4,369	3.7%
Professional, Scientific & Tech Services	125	13.4%	1,114	8.0%	452	11.2%	3,215	4.4%	796	10.9%	5,938	5.1%
Legal Services	46	4.9%	360	2.6%	146	3.6%	973	1.3%	213	2.9%	1,771	1.5%
Management of Companies & Enterprises	2	0.2%	14	0.1%	8	0.2%	484	0.7%	11	0.1%	501	0.4%
Administrative & Support & Waste Management & Remediation	26	2.8%	380	2.7%	137	3.4%	1,349	1.8%	287	3.9%	2,802	2.4%
Educational Services	17	1.8%	237	1.7%	77	1.9%	1,564	2.1%	183	2.5%	7,485	6.4%
Health Care & Social Assistance	132	14.2%	4,513	32.3%	531	13.2%	33,795	46.1%	734	10.0%	37,346	31.8%
Arts, Entertainment & Recreation	18	1.9%	172	1.2%	66	1.6%	720	1.0%	142	1.9%	1,714	1.5%
Accommodation & Food Services	84	9.0%	1,869	13.4%	336	8.4%	6,939	9.5%	576	7.9%	10,929	9.3%
Accommodation	8	0.9%	158	1.1%	29	0.7%	511	0.7%	46	0.6%	882	0.8%
Food Services & Drinking Places	76	8.2%	1,711	12.2%	307	7.6%	6,428	8.8%	530	7.2%	10,047	8.6%
Other Services (except Public Administration)	96	10.3%	507	3.6%	477	11.9%	2,980	4.1%	916	12.5%	6,421	5.5%
Automotive Repair & Maintenance	2	0.2%	27	0.2%	32	0.8%	279	0.4%	104	1.4%	933	0.8%
Public Administration	2	0.2%	20	0.1%	19	0.5%	274	0.4%	86	1.2%	1,962	1.7%
Unclassified Establishments	53	5.7%	49	0.4%	182	4.5%	253	0.3%	349	4.8%	267	0.2%
Total	932	100.0%	13,988	100.0%	4,020	100.0%	73,374	100.0%	7,335	100.0%	117,294	100.0%

Source: Copyright 2018 Infogroup, Inc. All rights reserved. Esri Total Residential Population forecasts for 2018.
Date Note: Data on the Business Summary report is calculated using **Esri's Data allocation method** which uses census block groups to allocate business summary data to custom areas.